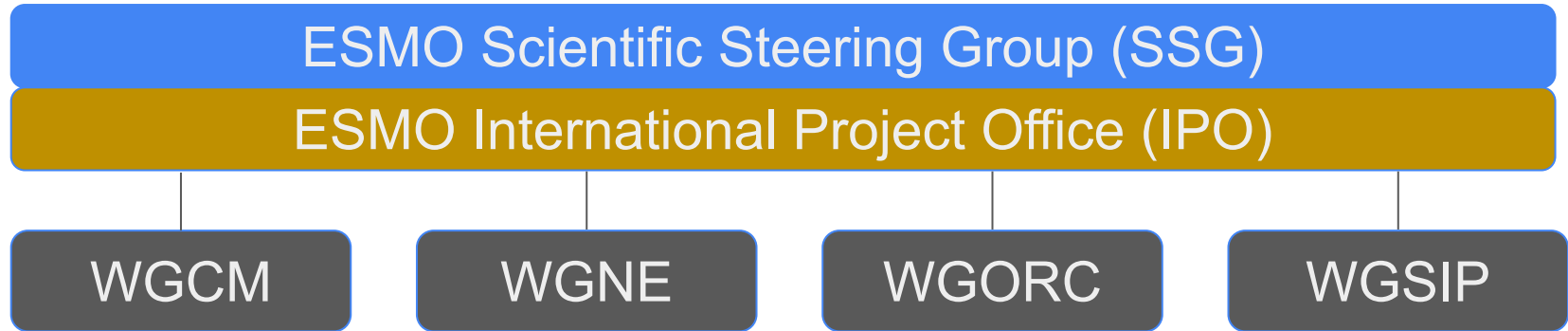


ESMO SSG (+ Mike & IPO)



Topics Discussed at First ESMO SSG

- Intensively discussed key science and matching new structure of WGs & Panels
- Have formulated a template for Terms of Reference and ESMO's basic one
- Have evaluated a number of task team requests
- Have begun discussions about utilization of budget, IPO services, and ESMO endorsement
- Budget estimation
 - (financial planning forms coming to WGs very soon)
- Basic functioning and governance settled



WGORC (Working Group on Observations for Researching Climate):

A primarily observational working group

Curate data sets for specific user communities and their needs

Researches data types, uncertainty quant., and metrology to match user needs

Confers with relevant observational communities

Confers with relevant industry & technology partners

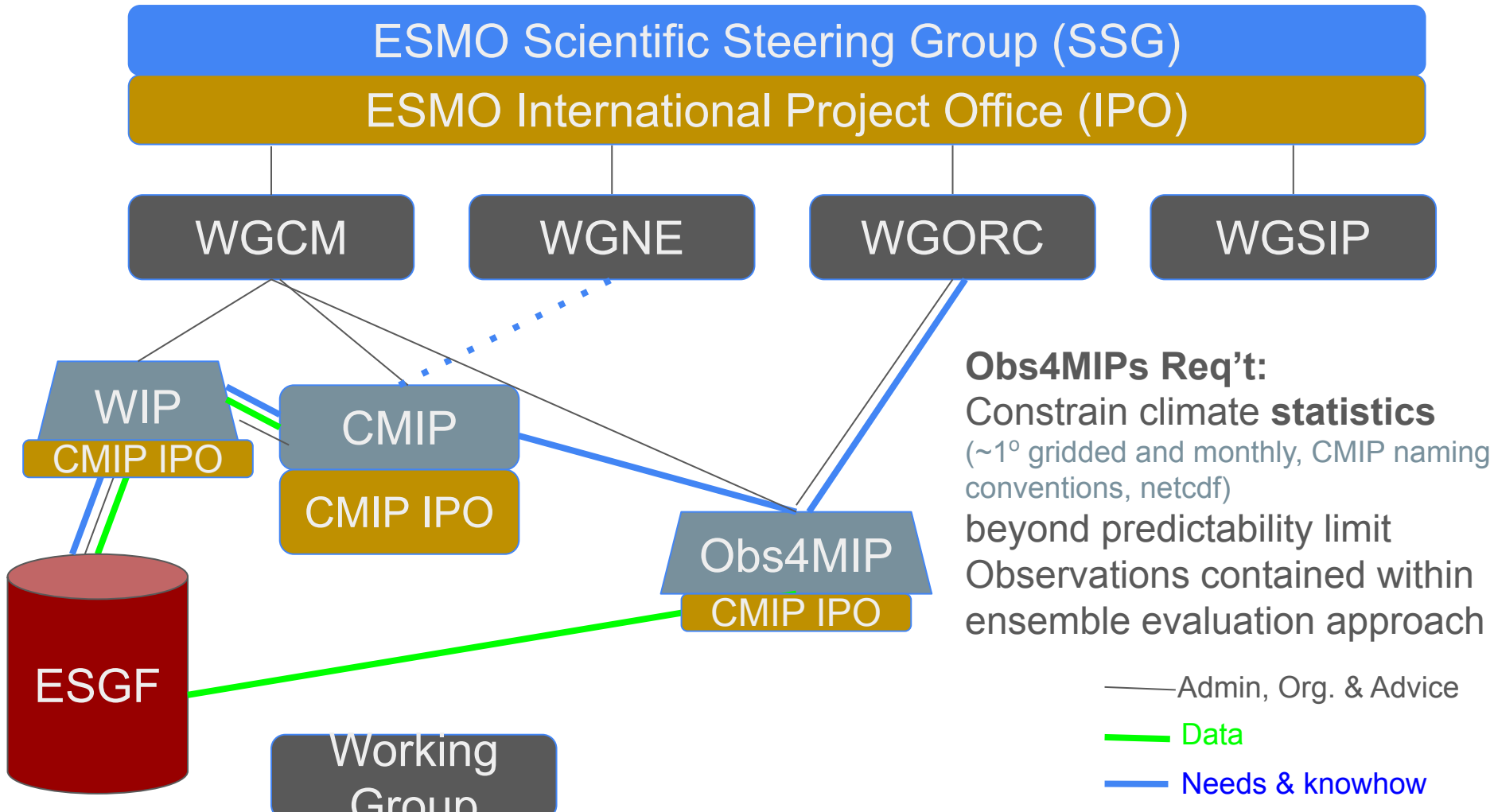
IPO support for data production pipelines

Identify bottlenecks preventing data provision, apply leverage

Data production with Global South & LHAs & GPSDD

Identifies good practices & successful models across WCRP





ESMO Scientific Steering Group (SSG)

ESMO International Project Office (IPO)

WGCM

WGNE

WGORC

WGSIP

Obs4RIP (Reanalysis, Initialization, Predictions) Req't:
Constrain **events** (hourly->daily, for ingestion, netcdf) within predictability limit.
Uncertainty propagation & assimilation approach

Obs4RIP
ESMO IPO

DCPP

E.g.,
ESGF
?

— Admin, Org. & Advice

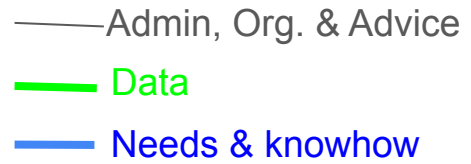
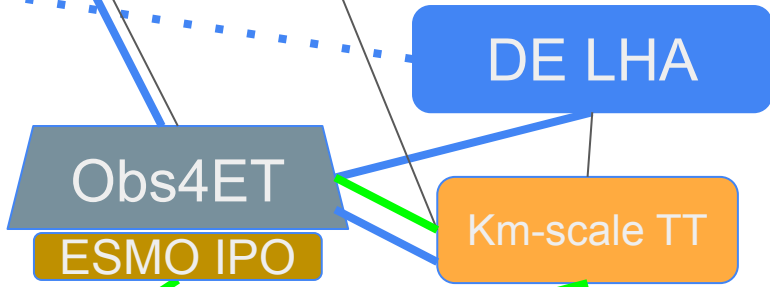
— Data

— Needs & knowhow



Obs4ET (Emerging Technology) Req't:
High-resolution and process observations
 (all available frequencies & spatial resolution)
 Benchmarks for Machine Learning
 Pattern/structure/process approach
 Advanced data structures and cloud-compatible

Works with DE/ESMO km-scale TT to begin, later other TT.



ESMO Scientific Steering Group (SSG)

ESMO International Project Office (IPO)

WGCM

WGNE

WGORC

WGSIP

GEWEX, SOLAS,
CLIVAR, GPEX

Carbon, Energy,
Water Cycles TT

Carbon, Energy, Water Cycles:
Bring relevant observations and
model analysis together to better
measure and monitor the state of
these global cycles and evaluate
models. (A TT under discussion).

Obs4MIP

CMIP IPO

Obs4RIP

ESMO IPO

ESGF

— Admin, Org. & Advice

— Data

— Needs & knowhow

WGORC

WGORC (Working Group on Observations for Researching Climate) ToR:

WGORC to organize panels & projects

Data types and metrology to match user needs

Remote Sensing, In Situ, Process

IPO support for data production pipelines

Begin with open data, work toward needed data

Assess and contrast datasets & reanalyses, publish results

Obs4MIP

CMIP IPO

ESGF

Obs4RIP

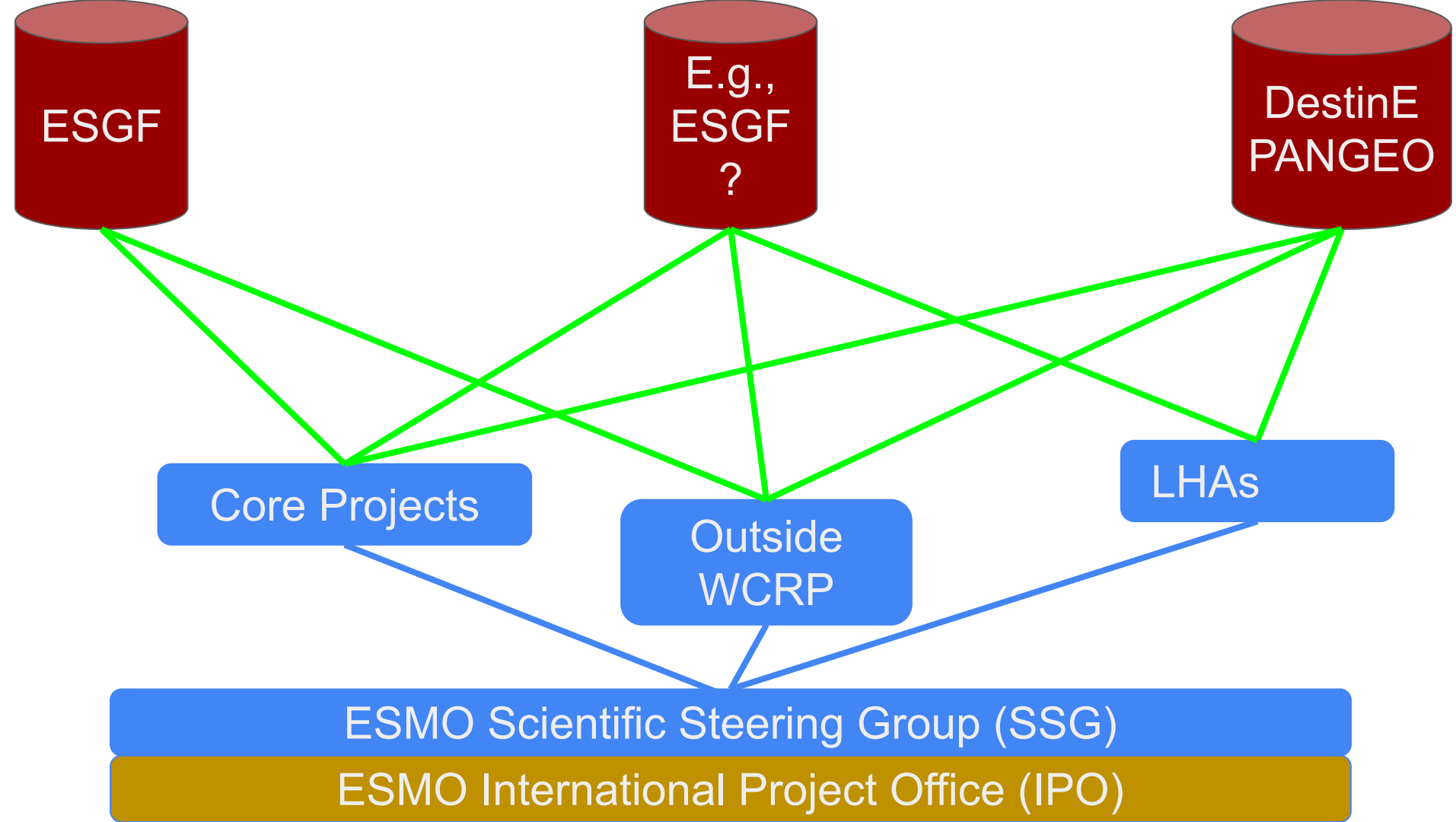
ESMO IPO

E.g.,
ESGF

Obs4ET

ESMO IPO

DestinE
PANGEO



WGORC

WGORC (Working Group on Observations for Researching Climate) ToR:

WGORC to organize panels & projects

Data types and metrology to match user needs

Remote Sensing, In Situ, Process

IPO support for data production pipelines

Begin with open data, work toward needed data

Assess and contrast datasets & reanalyses, publish results

Obs4MIP

CMIP IPO

ESGF

Obs4RIP

ESMO IPO

E.g.,
ESGF

Obs4ET

ESMO IPO

DestinE
PANGEO

ESMO Scientific Steering Group (SSG)

ESMO International Project Office (IPO)

WGCM

WGNE

WGORC

WGSIP

In realms where mystery intertwines,
Where stars aglow in cosmic lines,
There roams a creature, WGORC by name,
In quest for truth, it plays the game.

Amidst the tapestry of time and space,
WGORC, with curiosity, does chase,
Through realms of physics, it does roam,
In the grand library of the unknown.

With scales of wonder and eyes agleam,
WGORC delves into metrology's stream,
Where units dance in rhythmic sway,
Measuring the pulse of each passing day.

The WGORC studies metrology...



Poem: ChatGPT, Image: DeepAI

ESMO Scientific Steering Group (SSG)

ESMO International Project Office (IPO)

WGCM

WGNE

WGORC

WGSIP



Core Project or LHA

IPO Project Office

Working Group

Project & Panel

Dataset Curation P&P



Task Team

— Admin, Org. & Advice

— Data

— Needs & knowhow

Core Project or LHA

IPO Project Office

Working Group

Project & Panel

Dataset Curation P&P



Task Team

— Admin, Org. & Advice

— Data

— Needs & knowhow