

Regional Information for Society (RifS)

Dragana Bojovic | Knowledge Integration Team
Earth System Services | Earth Sciences Department
Barcelona Supercomputing Center

wcrp-rifs.org



RifS
Regional
Information
for Society



Regional Information for Society ^{by, with}

What is RIFS?

RIFS is a Core Project of the [WCRP](#), intended to help advance international collaboration on bridging the gap between climate research and climate information used to **make decisions**.

RIFS pays special attention to **building local capacity** to empower researchers to work within their own regional contexts with decision-makers.

RIFS is NOT...

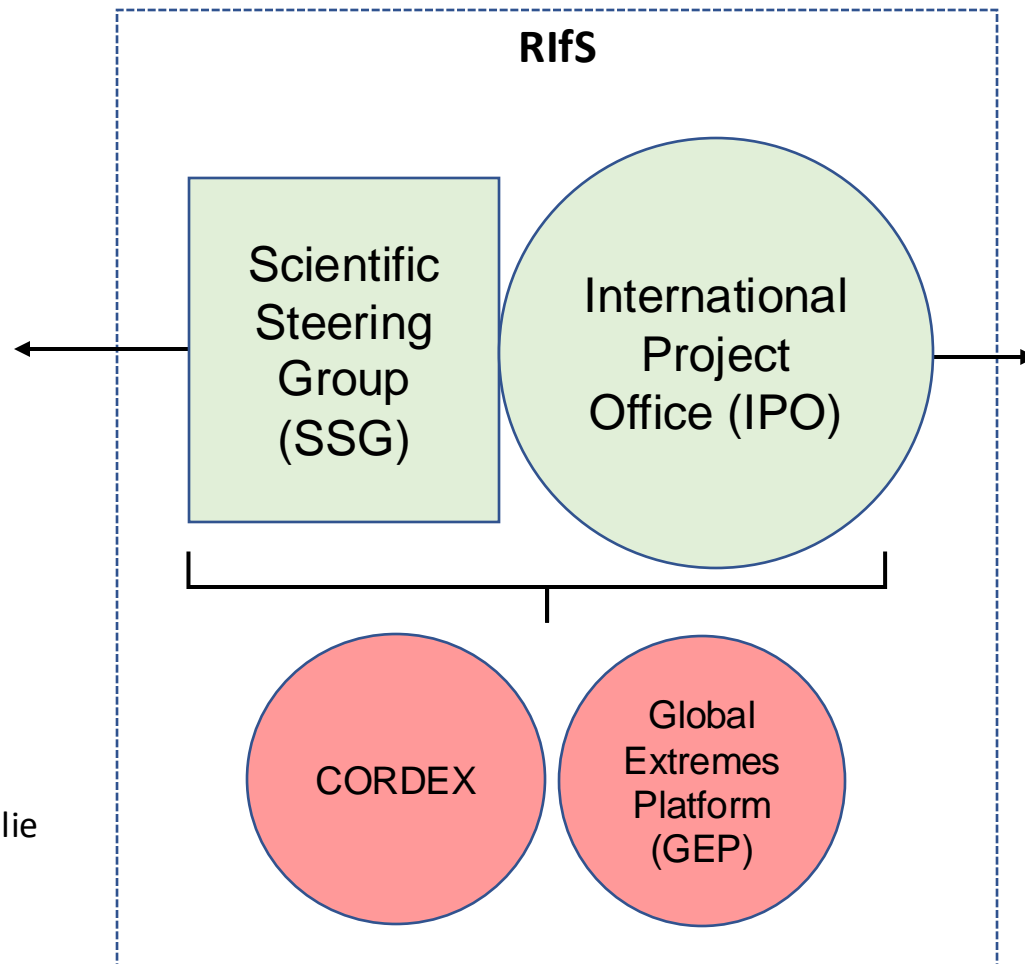
a replacement for existing regionally relevant activities within WCRP
an operational climate service to stakeholders for WCRP

Overarching challenges:

1. How to optimally identify, understand, and model **the relevant climate processes** ...to manage the socio-ecological risks **at the decision scales within regions**.
2. How to optimally integrate **multiple lines of evidence** to inform society's climate information needs.
3. How to best undertake **engagement** between stakeholders and the science community to maximize the information benefit and ensure that the user context is integrated into the design and execution of relevant climate research.

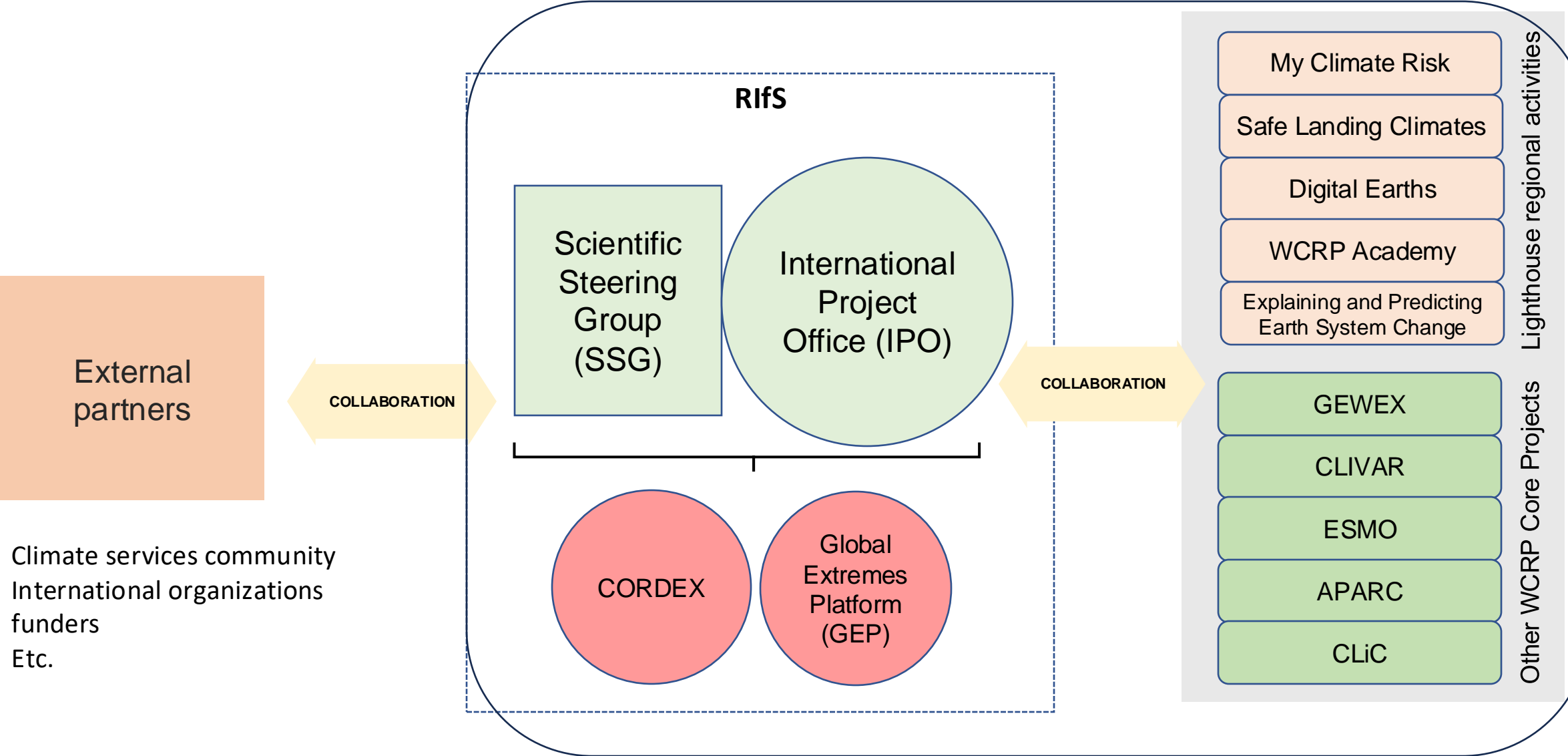
Structure

- **Bruce Hewitson, Univ Cape Town**
- **Sara Pryor, Univ Cornell**
- **Silvina Solman, Univ Buenos Aires**
- Paul Block, Univ Wisconsin-Madison
- Dragana Bojovic, Barcelona Supercomputing Center
- Louis-Philippe Caron, Ouranos
- Alessandro Dosio, Commission Européenne
- Luke J. Harrington, Univ Waikato
- Kevin Horsburgh, Green Climate Fund
- Morten Andreas Dahl Larsen, Danish Meteo Institute
- Jemimah Maina, Conservation International
- Lincoln Alves, Brazil Institute for Space Research
- Wendy Sharples, Bureau météo Australie
- 2 membres to confirm shortly



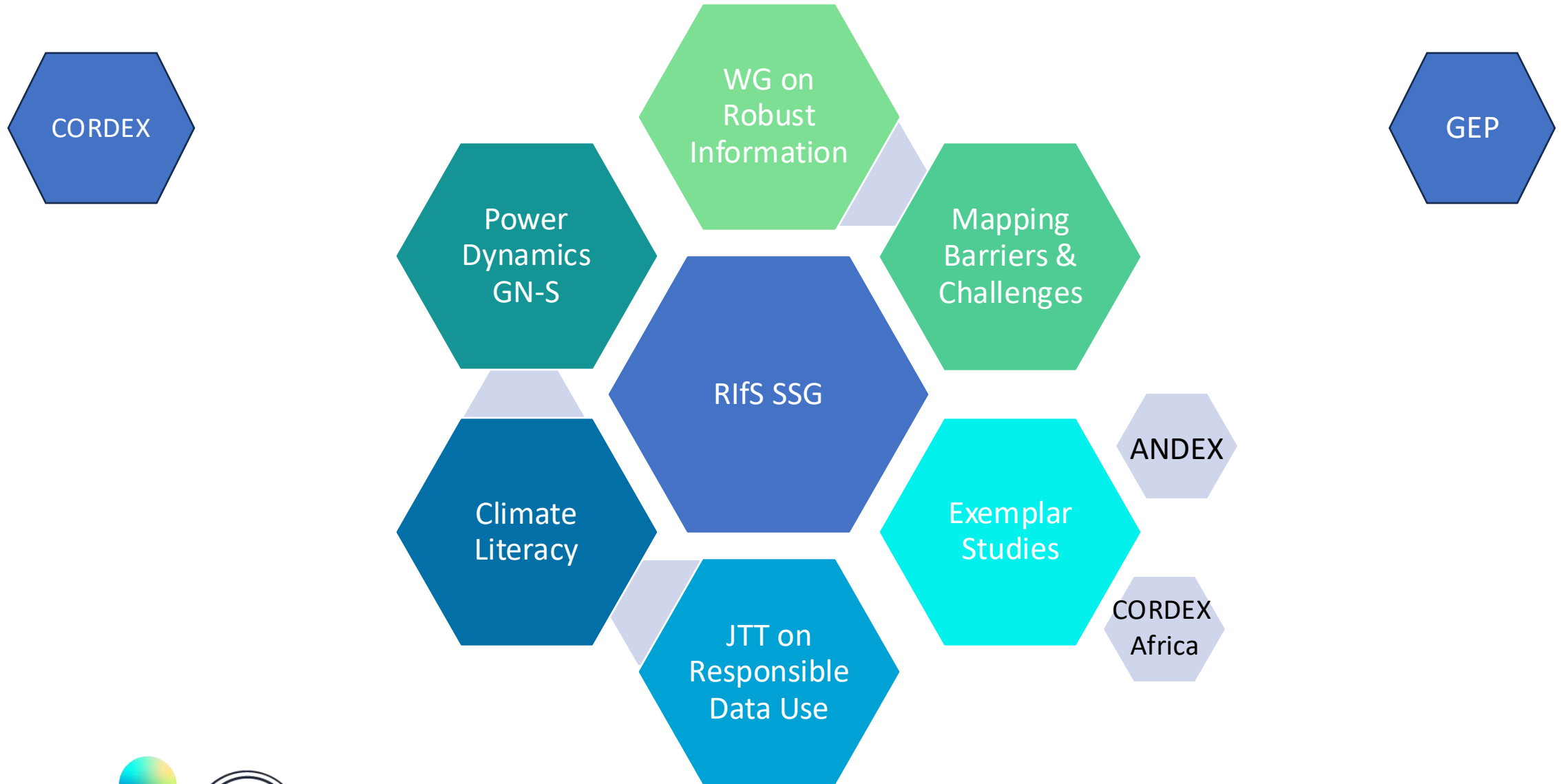
- Naomi Goldenson, Director
- Anne Debrabandere, Program manager
- To come, Science Officer
- To come, Science and Communication Officer

Structure



- Climate services community
- International organizations
- funders
- Etc.

Planned science initiatives



Interim Working Group on Robust Information

In April 2024, RfS organized an expert meeting on Robustness of Climate Change Information for Decisions [\[read more here\]](#), to address this issue:

When sources of climate change information do not agree or are misaligned to decision contexts, there is a lack of consensus on how to resolve these two problems to inform local-to-regional decision-making that leads to consequences.

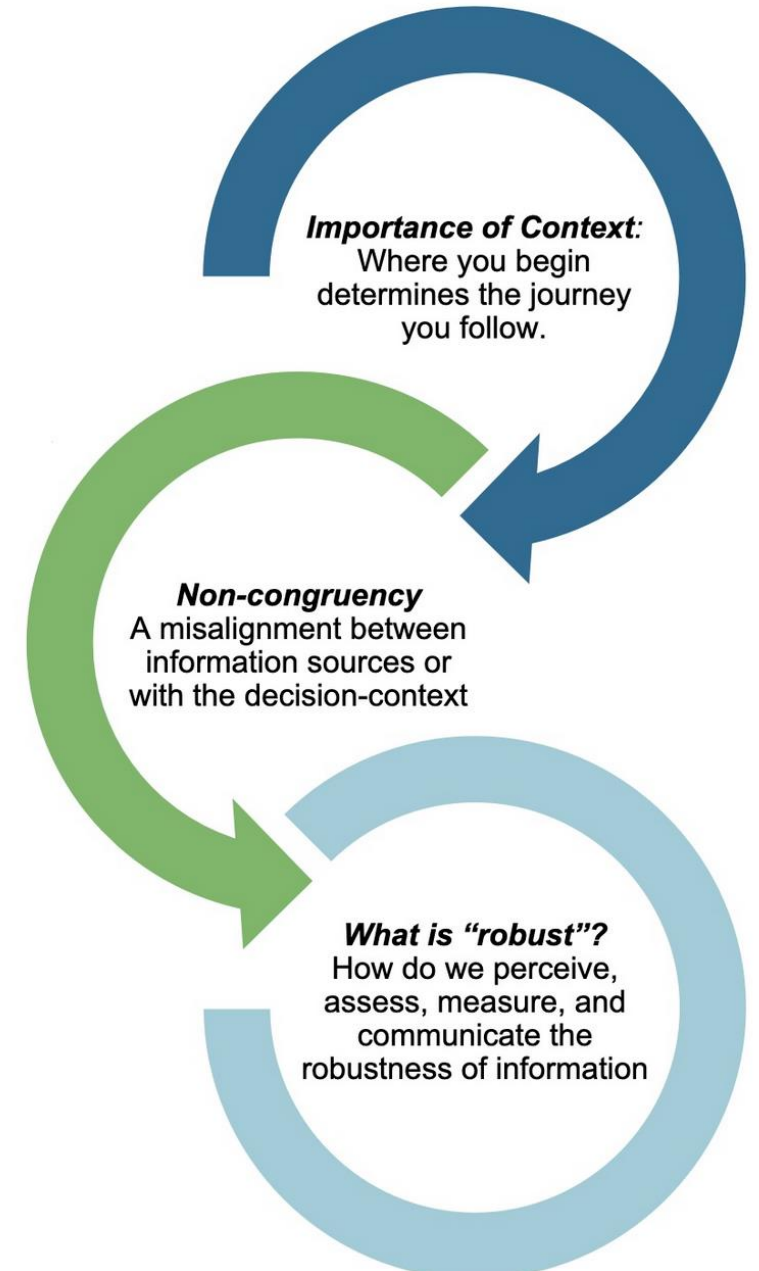
How can I know I can act on this information? How do I understand, assess, qualify, or quantify its robustness for my decision in my unique context?

policy makers, decision-makers, donor agencies



Will I accept proportional responsibility for societal consequences of a decision based on my information?

scientist / information creator or provider



Interim Working Group on Robust Information

In April 2024, RfS organized an expert meeting on Robustness of Climate Change Information for Decisions [[read more here](#)], to address this issue:

When sources of climate change information do not agree or are misaligned to decision contexts, there is a lack of consensus on how to resolve these two problems to inform local-to-regional decision-making that leads to consequences.

How can I know I can act on this information? How do I understand, assess, qualify, or quantify its robustness for my decision in my unique context?

policy makers, decision-makers, donor agencies



Will I accept proportional responsibility for societal consequences of a decision based on my information?



scientist / information creator or provider

- Guidance and Standards
- North/South partnerships
- Ethics, transparency & accountability
- Research to reduce epistemic uncertainties impacting decision-making
- Joint Task Team with CMIP on Responsible Data Use (**terms being drafted**)

Mapping Barriers and Challenges

- Initiative starting with EMCRs
- May form a task team to guide ongoing work
- Intent to identify bottom-up priorities

Mapping Barriers and Challenges to the Use of Climate Change Information

Context:

The barriers and challenges of climate researchers, particularly in the global South, who are engaging with local-to-regional stakeholders in any sector to try to provide climate change information for decisions.

It is anticipated that these barriers and challenges will relate to:

1. resources and (lack of) infrastructure,
2. pressing science gaps
3. partnering with sector-based stakeholders

Exemplar regional studies

Big picture:

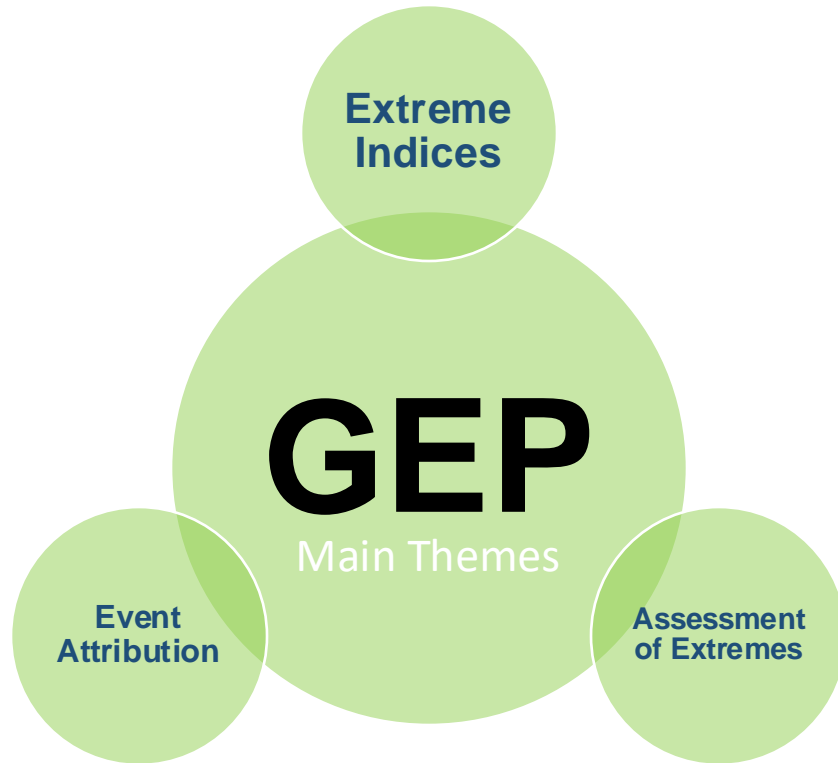
- Work with a few existing regional projects in WCRP to strengthen societal elements.
- Synthesize from the experience a framework for doing this across more projects.

Specifics / practical:

- Initial collaborations with ANDEX (GEWEX RHP)
- Considering several pilot action concepts

Workshop planning with CORDEX Africa and new Rifs Task Force forming

Global Extremes Platform (GEP) Highlights



GEP builds upon and integrates activities on **weather and climate extremes** across WCRP

Support-Unit staff hiring
a coordination officer (Ying Han)
a science officer (Qiaohong Sun)

Working Group on Event Attribution

In-person kick-off meeting in late November 2024 in Nanjing, China

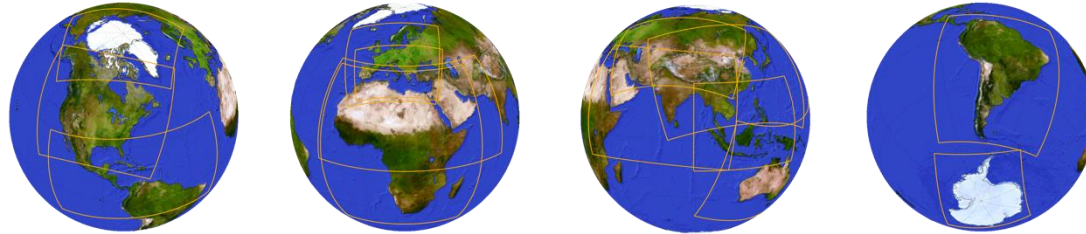
Working Group on Assessments of Extreme Events

An in-person **Workshop on Annual WCRP / Rifs / GEP Extremes Updates: "Annual Up-dates on Regional Extremes for Society"** is proposed for early 2025 in Switzerland (WMO or ETH Zurich) to

CORDEX

Planned science initiatives and major events

- Several **capacity building trainings/workshops** in Asia, Africa, Central and South America



- Particular strategic funding request funding for activity in Asia
- Further development of the **Flagship Pilot Study** initiative

Invitation to participate

wcrp-rifs.org



RIfS is initiating a breadth of activities that seek to enhance and focus research, partners with society, grows cross-community collaboration, and develops capacity inclusive of the perspectives from the global south and north.

Four key clusters of research collaboration:

- regional climate information and projections
- **seasonal to decadal predictability**
- weather and climate extremes
- communication and societal engagement.

We welcome engagement to explore partnerships and collaboration

